

INNOV-AiR ERECTING INSTRUCTIONS (V1.2)

WE URGE YOU TO TAKE THE TIME TO STUDY THESE INSTRUCTIONS IN EVERY DETAIL!

**** YOU MUST KEEP YOUR BOX WHILST YOUR AWNING IS UNDER WARRANTY ****

This is a very large box which we have made especially for our AiR awnings.

You will struggle to find a similar box if you choose NOT to keep the original.

We will be unable to collect your awning whilst under warranty if you do not keep this box.

Firstly, check the contents of each box within 7 days of receipt. If for any reason some items are found to be missing, then it's important we know which box they are missing from in order to send you the correct quantity. A check list can be found at the end of this document. This is a good time to familiarise yourself with the various component parts of your awning.

INSTRUCTIONS

We recommend that the draught cloth and wheel arch cover are fitted first. This helps to avoid catching parts of the awning within the wheel arch or under the caravan. **(NB. Grease, oil, tyre dressing etc, cannot be removed from the canvas and is not covered by the warranty)**

IMPORTANT Ensure that all air valves are fully closed (diagram 1). This can be achieved by pressing in the valve insert within the valves core with your finger or thumb and turning it clockwise. **(Do not use pliers or similar to do this, it will damage the valve and this would not be covered by our warranty.)** The valves are fitted to the bottom of each main AiR beam. **(To test, push the insert down with your finger and it should spring back up following your finger out of the valve.)** See below;

When inflating your new AiR awning, we recommend that for the first two or three times, you leave the dust caps OFF the valves whilst inflating. Once you are happy that the awning is fully inflated, you can then replace the dust caps. We recommend inflating using a central valve initially. If whilst inflating the awning, any of the valves appear to be not fully closed, push in and out a couple of times with your finger to rectify this.

VALVE CLOSED (Ready for **inflation**)



Diagram 1

VALVE OPEN (Ready for **deflation**)

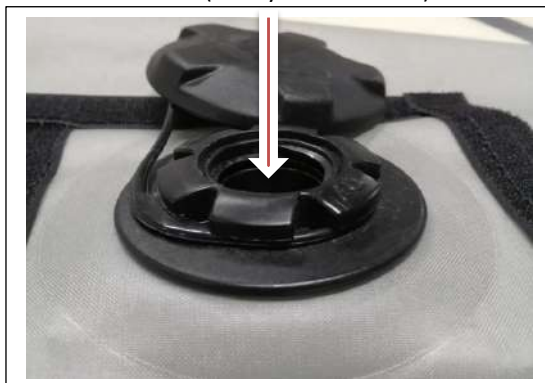


Diagram 2

The Innov-AiR awning has detachable front panels. It is generally easier to fit and remove the awning from the caravan with all panels removed however: **It is important that all panels are fitted prior to any pegging or inflating of the awning. This is absolutely necessary to ensure the correct awning footprint is established and the tubes inflate correctly within that footprint.**

Thread the awning piping into the caravan channel. You will need assistance here, one feeding the channel, the other pulling the awning along the caravan. Do not pull the awning by the inflatable beams as this will damage them. Most caravans are fitted with “feed in” points at the base or at head height of the channel. Position the awning centrally on the caravan taking care to ensure there is an equal amount of space from the ground at both ends. It is important to establish exactly where you want the awning footprint, as to change the position after erection requires a full dismantle and re-peg!

Fit pegging ladders to the two back corners of the awning on the clips provided. Please make sure you peg as shown in diagram 1 and pull the side panels as close to the caravan wall as possible, ensuring both are sloping outwards for approx. 30cm (1 foot) and flush. To help get a secure fit, peg the ladder slightly underneath the caravan as shown below. Make sure at this point that the side door zips are both fully closed.

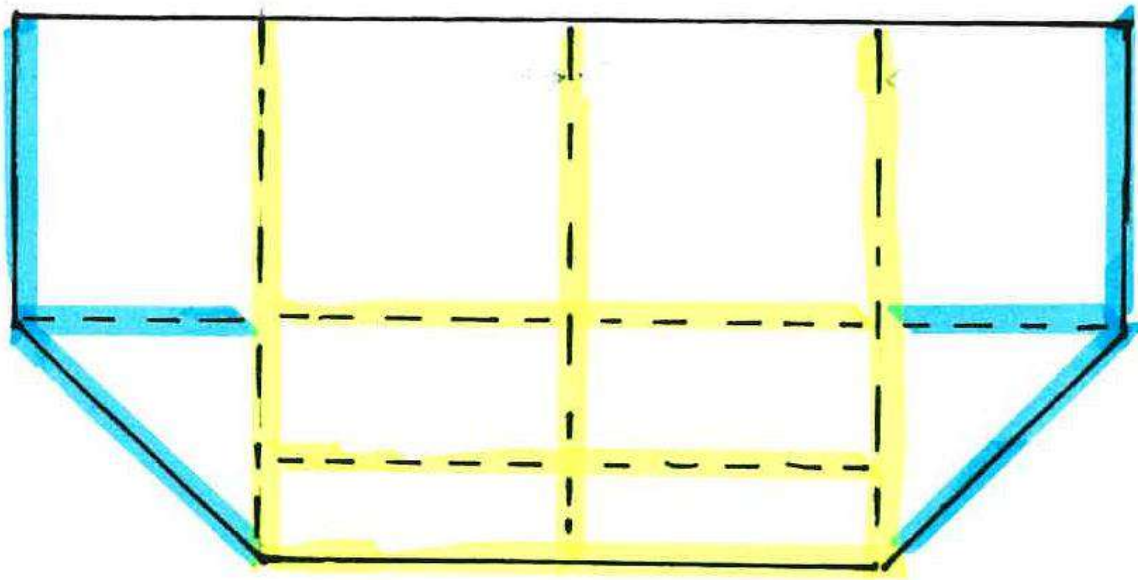


Diagram 1

At this point you can peg the two front corners of the awning. Before pegging you must **a)** ensure that the canvas footprint is square to the caravan and taut along the bottom of all three sides and, **b)** you peg, if possible, on the same “ladder” position you used when pegging at the back next to the caravan. Ladder “Rung” number 3 is ideal. Rungs 1 and 6 are for emergency use only.

There are 2 pump adapters supplied. The larger for the electric pump, the smaller for the foot pump. These should be fitted to each pump hose. You may have to remove any already fitted adapter from the hose ensuring you leave on the fitting that connects to the pump. *(It is easier to simply cut off the unwanted fitting.)*

The main central section of the awning should be inflated first, the area highlighted yellow in the diagram below.



Screw the valve inflation adapter into the chosen valve ensuring that it is not cross threaded. *(This should only require between 0.5 and 1.0 clockwise turn to seal sufficiently.)*

If using the electric pump, set the dial located on the front of the pump body to “30”. This should deliver a final pressure of approx. **0.3Bar**, the working pressure. The pump will automatically stop at the pre-set pressure. Should the pump not automatically stop, it is likely that a valve has been left “locked open” (see paragraph 3 on page 1) or the adapter is cross threaded. *(The pump is capable of delivering up to 1.0Bar which is **too high**, so please ensure the dial is set correctly).*

Attach the crocodile clips to the 12-volt power source, either on your caravan or car battery, ensuring correct polarity. Firmly press the button on the pump and the pump should start. *(The switch is waterproofed and may require firm or repeated pressure until it starts up.)*

When using the foot operated pump, connect in the same way. *(5 ltrs. of air is delivered with each press and the pump is only capable of inflating to a maximum of 0.3Bar.)*

During the inflation procedure, you will need to assist the inflation beams by lifting “**GENTLY**” on the canvas from the centre and each front corner, with the storm strap fitments on the canvas.

IMPORTANT If using the electric pump, you will notice it will stop momentarily and immediately re-start with a change in the sound of the pump. This is the change from turbine to piston pumping mode and it is at this point **you should assist the canvas.**

Once the main central section of the awning is fully inflated, check the awning’s position relative to the caravan. Make sure the awning is both square to the caravan and that the base of the awning, along the front, is straight and reasonably taut.

From inside the awning, you should now connect the right and left section roof beams to the main central section. These attach by Velcro on the end of the beams to the corresponding Velcro on the main section’s beams. Repeat this for the narrower diameter front beams that run above the windows of these two sections.

You can now connect the pump to the valve on the main upright beam of the right section and inflate. Repeat for the left section. If using the “E” Pump the pressure setting remains the same as the rest of the awning.

Should there be any diagonal creases within the awning roof section, you should adjust the pegging at the front corners. This should see most, if any, of the diagonal creases disappear.

Once happy with the general fit of the awning, attach the sliding pegging clips to the small piping fitment on all the panels. Fit the remaining pegging ladders to both the sliding and fitted clips and peg all round with the large grey plastic pegs. **We strongly recommend that you cross peg at each doorway** to reduce pressure on the zip and stop the sliders “riding up” and opening. *(Keep the pump to hand for the moment in case it is necessary to partially deflate and re-inflate)*

Using the “mushroom” headed pegs, secure the mud-wall inside the awning, pushing the pegs through the eyelets within the mud-wall material.

Assemble the curtain rods by fitting the black plastic “rod ends” one to each tube. The rod ends have 2 internal diameters, the first for the thicker of the rods, the second for the thinner. Once pushed home (they are a tight fit), they will remain in place and there is no need to remove them after use.

Slide the correct size curtain onto one of the thicker rods *(one to each rod for the side panel windows)* then insert the thinner rod into it and fit the rod ends into the black loops found at the top corners of each window. “Tie Backs” are provided at the bottom of each window. Please refer to the curtain configuration sheet within the pack, to establish which curtains go where.

On the front windows, attach the elastic/toggle to the black loops at the bottom corner of each window. This will ensure that when the curtains are drawn, they are held against the front panel of the awning.

Should there be the possibility of adverse weather conditions, we recommend that you use the “storm straps” fitted to the front of the awning. These simply click into the fitted buckles and are then pegged out at an appropriate angle and adjusted at the buckle. ***(Do not over-tension these as they may adversely affect the overall shape of the awning.)***

On a new awning we would advise starting the pump again to ensure any movement caused by the bladder settling, has not dropped the pressure slightly. *(This pumping cycle may not even start or may last only a few seconds.)*

That’s it, enjoy!

DEFLATION

When taking the awning down, open the dust covers and remove the pump from all valves. Deflate by pushing in the valve insert with your finger at the same time twisting the insert anti- clockwise, which will lock the valve open. We recommend that this is done with all the valves to ensure as much air as possible leaves the bladders for packing. Then simply reverse the order of the instructions. When packing the awning away lay the canvas outside down, on top of your ground sheet, on the ground. Fold the side panels into the roof but leave the front panels flat on the floor or, you can remove them altogether. Fold the roof and front lengthways into three or four depending on the size awning you have and roll up the canvas from the roof end. As the valves are still open this will allow all air pockets to empty and reduce the size of the packed awning. *(Once*

rolled, it is good practice to unroll and re-roll the canvas to expel more air.) This process can be made much easier if the front panels are removed before deflation. It is however important they are re-fitted prior to putting the awning up again to ensure the correct “footprint” is achieved before inflation.

IMPORTANT

A new awning will require time to “**weather**”. As such you may experience some leaking through the sewn seams until such time as the thread within the stitch holes has had the opportunity to swell and fill out the stitch holes. There is no time limitation on when this is achieved but 3 or 4 good soakings should suffice. The most important part of the weathering process is the awning drying out thoroughly before the next rain fall. Light rain is ideal for this purpose but if subjected to very heavy rain when new, considerable leaking may be experienced!

On first inflation, the air bladders within the awning may need to adjust themselves to “comfort” fit. Should you see any areas where the inflation beams have a slightly twisted, misaligned or “lumpy” appearance, it is advisable to deflate the beams and then re-inflate. Each time the awning is inflated any “lumpy” areas will eventually disappear once the bladder has settled within the confines of its carrier.

Please do not attempt to open any of the containment zips in the air beams at any time. There are no customer serviceable parts contained within those zips and opening them without an express written instruction from Bradcot will invalidate your guarantee. These zips are fitted with a “use once only” security tag and should not be removed.

The air beams adjacent to the caravan are not attached to the main canvas for a small distance. This is deliberate to allow a comfortable fit against the caravan.

The pressure within the beams is temperature sensitive. A 20c degree change in ambient temperature can be coped with by the beams. However, if you erected the awning on a hot day, it is advisable to re-pressurise the beams once the ambient temperature has dropped. This will ensure the unit remains at working pressure when cold.

As with all marine grade (serviceable) valves some loss of air pressure and volume is inevitable through the valve. As such we recommend that the foot operated pump is available on hand with which to “top up”. If the beams are easily depressed with a hand grip you should top up from any one of the valves. A twice daily check is recommended.

The electric pump can draw considerable amps in piston mode. As such we **do not** recommend extending its power lead. Connection must be made to a suitable 12-volt battery with the crocodile clips. **Do not** attempt to fit a “**cigar lighter**” type plug to the lead. **This could damage the cars wiring.**

REGISTERING YOUR NEW AWNING

All of our inflatable awnings come with a lifetime guarantee on the bladders and valves. Because of this we strongly recommend that you keep your original receipt (preferably something with your name and/or address on) along with this paperwork, as it will be needed in the event of a claim.

Please also register your new awning immediately on our website at **www.bradcot-awnings.co.uk**. (This service is available “on-line” only and is not available by telephone.) Registration ensures that

we have an accurate record of the units you have bought and that your details will be easily accessed should you feel the need to contact us in the future.

In the unlikely event you have any component parts missing from your package, please contact us immediately with your order details at info@bradcot-awnings.co.uk. Any shortages or damage must be reported with 7 days of you receiving the product to avoid any charges for the supply.

We would also strongly recommend that you complete the form on your Awning Guarantee card and keep for your own records along with your awning receipt and any original documents.

GENERAL CARE OF YOUR NEW AWNING

The following are some general “dos and don’ts” to help get long and faithful service from your awning;

- Do: Open out your awning at home, make yourself familiar with the contents and check for anything missing using the packing check sheet attached.
- Do: Ensure the awning rail on your caravan is clean and smooth running.
- Do: Dry the awning fully within 7 days of taking it down.
- Do: Wipe each pole with a dry cloth after the frame has been dismantled.
- Do: Ventilate your awning as much as possible, or condensation can form on the underside of the roof, which is often mistaken for leakage.
- Do: Be aware that some seams may leak until “weathering” is complete. More information on weathering and condensation can be found at www.bradcot-awnings.co.uk
- Do: Clean all mud etc from the mudskirt and splashwall after each use.
- Do: Wipe your awning with a clean cloth or brush with clean tepid water. Further cleaning advice can be found at www.bradcot-awnings.co.uk
- Do: Contact our customer services department for any advice on info@bradcot-awnings.co.uk

- Don’t: If possible, pack your awning away whilst still wet or damp.
- Don’t: Clean the awning with any type of detergent.
- Don’t: Use any aerosol sprays on or near the canvas parts.
- Don’t: Use any awning “tie-down” kit, other than that available from Bradcot UK. These can be purchased via our website.
- Don’t: Use any electrical appliances inside the awning. This is a fire hazard.
- Don’t: Cook with a naked flame inside the awning.
- Don’t: Attempt to erect the awning in windy conditions.
- Don’t: Leave your awning unattended for long periods. You will be required to top up with air as and when necessary.



INNOV-AiR PACKING CHECK LIST (V1.2)

The following is a list of contents that should be found within the “INNOV-AiR” AWNING BOX.

MAIN AWNING CANVAS PACK

GROUND PEG PACK (to include large and small pegs)

STORM STRAPS (Sizes 900-1005 x 5, Sizes 1020-1155 x 6)

DRAUGHT CLOTH PACK (includes draught cloth, wheel arch, channel, Velcro)

PEGGING LADDER PACK

SLIDING “LADDER CLIP” PACK

CURTAIN PACK

CURTAIN ELASTIC PACK

INFLATION PACK (pump adapters)

MANUAL INFLATION FOOT PUMP

CURTAIN ROD PACK (includes rods, rod end plugs (1 size) and instructions)

INSTRUCTION PACK

☐
☐
☐
☐
☐
☐
☐
☐
☐
☐
☐
☐

INSTRUCTION MANUAL UPDATES

Please check online at www.bradcot-awnings.co.uk for any updated version of these instructions.

These are checked regularly and posted online for you to download at your convenience.